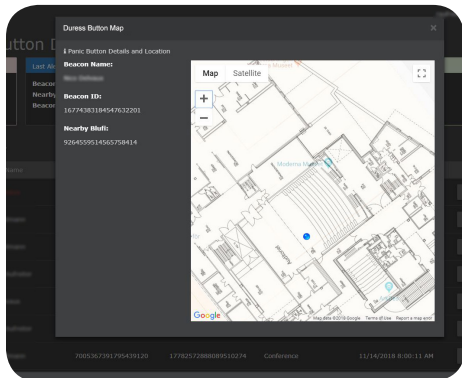




BEEKs™ Duress Badge Beacons



PERSONAL BLE BEACONS WITH ALERT BUTTON FOR LOCATION SERVICES AND WORKPLACE OPTIMIZATION

- **Secure** – Built-in duress call button will raise an alert when pressed indicating the badge location, ID and nearest Blufi.
- **Multi-Purpose** – Use as BLE Beacon or in combination with any passive access card credential.
- **Rapid Implementation** – Gather real-time location data for workplace optimization or mustering.

BEEKs™ Bluetooth Low-Energy (BLE) beacons are among the most advanced beacon badges in the industry. Worn as badges they can provide valuable insights on workplace utilization or help ensuring everyone is safely out of a building in emergency situations.

When combined with HID Global's end-to-end IoT Services ecosystem, that includes Blufi™ BLE to WiFi gateways and the Bluzone™ cloud services, BEEKs can be centrally managed through the cloud to transfer new messages, firmware updates and battery status checks remotely. Their unique design allows BEEKs to broadcast reliably even in densely populated WiFi environments.

When the button on the backside of the BEEKs Button Badge is pressed, it will send an alert to the Bluzone Cloud (when in range of a connected Blufi). It can trigger several reactions like: e-mail as part of policy; alert to screen and alert to report or API call to activate / present an alert on custom dashboard or customer's legacy systems. This is

typically used for distress or notification signals by the wearer of the badge.

The duress badge is designed to hold a personalized ISO card (with optional RFID) in horizontal format.

BEEKs BLE beacons are available in multiple form factors and sensor configurations for different applications like Real-time Location (RTLS) for assets, condition monitoring of motorized equipment or retail use cases to interact with smartphones in an Apple iBeacon or Google Eddystone compatible format.

The extensible architecture allows organizations to scale deployments of standard beacon applications and extend to centralized management, real-time condition monitoring or location services in a later phase.

TECHNOLOGY HIGHLIGHTS:

- Bluetooth Smart 4.1 compliant beacons
- iBeacon (Apple), Eddystone (Google) and sBeacon HID supported simultaneously
- Location precision down to 6 ft (2 m)
- Central management possible
- Fast and easy roll-out
- Optional combination with any passive credential in ISO card format
- Call button, raising alert when pressed
- Usage options:
 - Personalized (locating individuals) or
 - Anonymously (utilization reports)

APPLICATION AREAS:

Workplace Optimization (requires Bluzone™ cloud)

- Optimize room occupancy
- Comply to health & safety regulations
- Adjust environmental building conditions based on room utilization

Real-time location for assets (requires Bluzone™ cloud)

- Quickly locate individuals or assets in an office or campus
- Position based alerting, heat-maps etc.
- Alert location function when the badge duressbutton is pressed

Emergency Mustering Requires Bluzone™ Cloud

- Quick and efficient counting of people at mustering points in emergency situations
- Central provisioning or monitoring via BluFi and Bluzone optionally possible

SPECIFICATIONS

| BEEKs | |
|------------------------------------|--|
| Duress Badge | |
| | |
| Base Model Number | BVBBN4B |
| ELECTRONIC | |
| Bluetooth communication | Bluetooth Low Energy 4.1, 2.4 GHz ISM |
| BLE Protocols | Eddystone, iBeacon, sBeacon |
| Sensitivity | -97dBm |
| Transmission power | -40dBm to +5dBm (-3 m to -150 m line of sight range) |
| Processor type | ARM Cortex M3 and M0 |
| Data rates | 1Mbit/s / 2Mbit/s |
| Memory | 55KB Flash |
| Sensors | Accelerometer (for energy saving) |
| Special Features | Duress alert button + LED |
| PHYSICAL | |
| Length x Width | 2.5 in x 3.5 in x 0.19 in (64 mm x 89 mm x 5 mm) |
| Mounting Method | Clip |
| Housing Material | Polycarbonate and ABS |
| Color | White + transparent frame |
| Weight | 0.85 oz (24 g) |
| BATTERY | |
| Type | Six CR2016, rated at 90 mAh each. Total 540mAh |
| Life | RTLS mode, dynamically advertisement when walking adv every 500ms and when no motion adv every 5000ms: 2 years |
| CHEMICAL AND MECHANICAL RESISTANCE | |
| Water | IP67, 68° F (20° C), 3.3 ft (1 m) x 1 h |
| Withstands Exposure To | Water and UV resistant |
| THERMAL | |
| Storage | -4° to +170° F (-20° to +77° C) |
| Operating Temperature | -4° to +170° F (-20° to +77° C) |
| OTHER | |
| Standards | FCC / CE; BLE |
| Options | Possible reactions to button press : 1. email as part of policy; 2. alert to screen and to alert report 3.API call to activate / present alert on custom dashboard or customers legacy systems. |
| Box Size | 10 pcs. |
| Warranty | 1 year |

